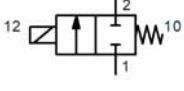
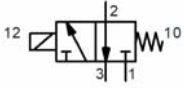


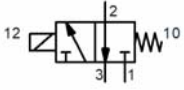
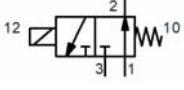
Dati tecnici: versione a comando diretto per vuoto

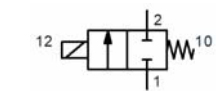
Technical data: direct operated version for vacuum

Elettropiloti per vuoto Electropilot for vacuum

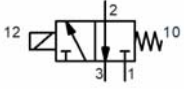
SIMBOLO / SIMBOL	Taglia / Size	Funzione / Function	Ø mm	Portata / Flow	Vuoto / Vacuum max mm HG	Tempo / Time ms. Ecc. 12 Dis.10		Codice / Code	Bobina / Coil
	1/4"	2/2 N.C.	3	5	755	15	8	-MF-G3300	M2
	1/4"		4	5	755	15	8	-MF-G3301	M2
	1/4"		5	5	755	15	8	-MF-G3302	M2
	1/4"		6	5	755	15	8	-MF-G3303	M2
	1/4"	3/2 N.C.	3	5	755	15	8	-MF-G3310	M2
	1/4"		4	5	755	15	8	-MF-G3311	M2
	1/4"		5	5	755	15	8	-MF-G3312	M2
	1/4"		6	5	755	15	8	-MF-G3313	M2

Elettropiloti per aria compressa Electropilot for compressed air

SIMBOLO / SIMBOL	Taglia / Size	Funzione / Function	Ø mm	Portata / Flow	Press. bar	Tempo / Time ms. Ecc. 12 Dis.10		Codice / Code	Bobina / Coil
	1/8"	3/2 N.C.	1,5	60	0 ÷ 10	12	12	-MF-A0211	M1-M3
	1/4"		2,4	150	0 ÷ 10	13	10	-MF-B0822	M2
	1/8"	3/2 N.O.	1,2	30	3 ÷ 10	12	10	-MF-A0213	M1-M3
	1/4"		2	90	3 ÷ 10	14	10	-MF-B0819	M2
	1/4"	2/2 N.C.	3	280	0 ÷ 10	14	12	-MF-B0827	M2
	1/4"		4	450	0 ÷ 8	14	15	-MF-B0829	M2
	1/4"		5	550	0 ÷ 6,5	14	18	-MF-B0831	M2
	1/4"		6	650	0 ÷ 5	14	30	-MF-B0833	M2



Elettropiloti per aria compressa per sottobase Electropilot for compressed air for sub-base

SIMBOLO / SIMBOL	Lato / Side (mm)	Funzione / Function	Ø mm	Portata / Flow	Press. bar	Tempo / Time ms. Ecc. 12 Dis.10		Codice / Code	Bobina / Coil
	21	3/2 N.C.	1,5	60	0 ÷ 10	12	10	-MF-A0184	M1-M3
	31		2,4	150	0 ÷ 10	13	10	-MF-B0687	M2
	21	3/2 N.O.	1,2	30	3 ÷ 10	12	10	-MF-A0188	M1-M3
	31		2	90	3 ÷ 10	14	10	-MF-B0685	M2

