

PRODUCT RANGE OVERVIEW

- MF-AirDrive™ :	ALUMINIUM CAPS SERIES
- MF-AirDrive™ SMART:	POLYARILAMIDE CAPS SERIES
- MF-AirDrive™ HP	HIGH PRESSURE (40 BAR) SERIES
- MF-AirDrive™ LH	LOW/HIGH TEMPERATURE SERIES
- MF-AirDrive™ ATEX	ATEX CERTIFIED SERIES
- MF-AirDrive™ BISTABLE :	BISTABLE PILOT SERIES

ENGINEERED DESIGN

Body: aluminum

Seals: PU - NBR - Silicon Viton

Internal parts: aluminum - brass- nickel plated AVP - POM

Caps: 2011 aluminum - black anodized. Polyamide PA6. /polyarylamide IXEF AG (for SMART series)

KEY FEATURES

High reliability: consistent performance even under demanding operating conditions.

Compact and lightweight: the SMART version's lightweight design provides greater application versatility, ensuring weight savings without compromising performance.

Wide pressure range: standard versions up to 10 bar; high-pressure versions up to 40 bar.

Resistance to extreme temperatures: L/H variants available for low- and high-temperature applications.

Durable materials: robust sealing solutions and aluminium bodies ensure long service life and reduced maintenance.

Made in Italy: entirely designed and manufactured by Mec Fluid 2, using carefully selected raw materials and strict quality control.

Energy-efficient: optimized design for low air consumption.

AVAILABLE SIZES

	1/8"	1/4"	3/8"	1/2"	3/4"	1"	1 1/2"	2"
Nominal diameter	5,5	8	10	15	19	25	39	50
Compressed air flow rate at 6 bar	600	1100	1500	5500	6500	13500	35000	60000

MF-AirDrive™

3/2 POPPET VALVES COMPRESSED AIR

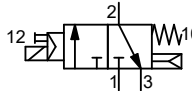
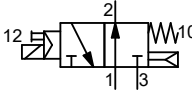
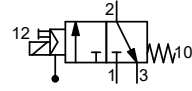
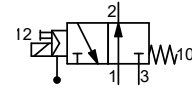
- Range G 1/8" + G 2"
- Patented conical poppet system with shaped PU membrane
- For high flow rates and cycle numbers
- Robust construction and low weight
- Body and caps in aluminium
- Also available with external pilot control (for use with pressure values lower than the minimum recommended)

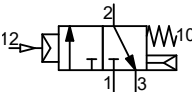
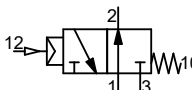


TECHNICAL FEATURES

Fluid	Filtered compressed air, with or without lubrication							
Ambient Temp.	-20 ÷ +50°C							
Fluid Temp.	Max +50°C							
Pressure	Max 10 bar							
Function	3/2 NC 3/2 NO							
Control	Pneumatic Indirect Electric							
Return	Mechanical and pneumatic spring							
Manual control	Screw, 2 positions							
Connection	G 1/8"	G 1/4"	G 3/8"	G 1/2"	G 3/4"	G 1"	G 1 1/2"	G 2"
Shape								
Ø electric operator (mm)	10			13				
Absorption	3,5W (DC) - 5VA (AC) 2,5W (DC) - 3,3VA (AC)			11W{DC}-10VA{AC}				
Voltage	12VDC-24VDC- 24VAC-110VAC-220VAC							
Mounting position	Preferably vertical							
Materials	Body: aluminum / Seals: PU - NBR / Internal parts: aluminum - POM - Nickel Plated AVP -Brass Caps: 2011 alloy aluminum - black anodized.							

PRODUCT DATA & CODES

	Connection	Control	Pilot Supply	Ø (mm)	Flow rate (l/min)	Working pressure (P1) from/to (bar)	Control pressure from/to (bar)	Time Exc.12/ Dis.10 (ms)	Electric Pilot Ø (mm)	Weight (gr)	Code
 <p>3/2 NC Solenoid/Spring</p>	G 1/8"	electric	internal	5,5	600	1,5---10	---	15/18	10	145	-MF-F2500
	G 1/4"	electric	internal	8	1100	1,5---10	---	20/22	10	400	-MF-F2510
	G 3/8"	electric	internal	10	1500	1,5---10	---	20/22	10	385	-MF-F2520
	G 1/2"	electric	internal	15	5500	2,0---10	---	18/25	13	805	-MF-F2530
	G 3/4"	electric	internal	19	6500	2,0---10	---	18/25	13	765	-MF-F2540
	G 1"	electric	internal	25	13500	2,5---10	---	20/30	13	1225	-MF-F2545
	G 1 1/2"	electric	internal	39	35000	3,0---10	---	45/30	13	3350	-MF-F2560
	G 2"	electric	internal	50	60000	3,0---10	---	50/35	13	8700	-MF-F2580
 <p>3/2 NO Solenoid/Spring</p>	G 1/8"	electric	internal	5,5	600	1,5---10	---	15/18	10	145	-MF-F2501
	G 1/4"	electric	internal	8	1100	1,5---10	---	20/22	10	400	-MF-F2511
	G 3/8"	electric	internal	10	1500	1,5---10	---	20/22	10	385	-MF-F2521
	G 1/2"	electric	internal	15	5500	2,0---10	---	18/25	13	805	-MF-F2531
	G 3/4"	electric	internal	19	6500	2,0---10	---	18/25	13	765	-MF-F2541
	G 1"	electric	internal	25	13500	2,5---10	---	20/30	13	1225	-MF-F2546
	G 1 1/2"	electric	internal	39	35000	3,0---10	---	45/30	13	3350	-MF-F2561
	G 2"	electric	internal	50	60000	3,0---10	---	50/35	13	8700	-MF-F2581
 <p>3/2 NC Solenoid/Spring</p>	G 1/8"	electric	external	5,5	600	0 ---10	≥P1---10	15/18	10	140	-MF-F2500A
	G 1/4"	electric	external	8	1100	0 --10	≥P1---10	20/22	10	395	-MF-F2510A
	G 3/8"	electric	external	10	1500	0 --10	≥P1---10	20/22	10	380	-MF-F2520A
	G 1/2"	electric	external	15	5500	0 ---10	≥P1---10	18/25	13	800	-MF-F2530A
	G 3/4"	electric	external	19	6500	0 ---10	≥P1---10	18/25	13	760	-MF-F2540A
	G 1"	electric	external	25	13500	0 ---10	≥P1---10	20/30	13	1220	-MF-F2545A
	G 1 1/2"	electric	external	39	35000	0 ---10	≥P1---10	45/30	13	3340	-MF-F2560A
	G 2"	electric	external	50	60000	0 ---10	≥P1---10	50/35	13	8690	-MF-F2580A
 <p>3/2 NO Solenoid/Spring</p>	G 1/8"	electric	external	5,5	600	0 ---10	≥P1---10	15/18	10	140	-MF-F2501A
	G 1/4"	electric	external	8	1100	0 ---10	≥P1---10	20/22	10	395	-MF-F2511A
	G 3/8"	electric	external	10	1500	0 ---10	≥P1---10	20/22	10	385	-MF-F2521A
	G 1/2"	electric	external	15	5500	0 ---10	≥P1---10	18/25	13	800	-MF-F2531A
	G 3/4"	electric	external	19	6500	0 ---10	≥P1---10	18/25	13	760	-MF-F2541A
	G 1"	electric	external	25	13500	0 ---10	≥P1---10	20/30	13	1220	-MF-F2546A
	G 1 1/2"	electric	external	39	35000	0 ---10	≥P1---10	45/30	13	3340	-MF-F2561A
	G 2"	electric	external	50	60000	0 ---10	≥P1---10	50/35	13	8690	-MF-F2581A

	Connection	Control	Pilot Supply	Ø (mm)	Flow rate (l/min)	Working pressure (P1) from/to (bar)	Control pressure from/to (bar)	Time Exc.12/ Dis.10 (ms)	Weight (gr)	Code
 <p>3/2 NC Air/Spring</p>	G 1/8"	pneumatic	---	5,5	600	1,5---10	≥P1---10	05/08	110	-MF-F2600
	G 1/4"	pneumatic	---	8	1100	1,5---10	≥P1---10	10/12	355	-MF-F2601
	G 3/8"	pneumatic	---	10	1500	1,5---10	≥P1---10	10/12	340	-MF-F2606
	G 1/2"	pneumatic	---	15	5500	2,0---10	≥P1---10	08/15	705	-MF-F2603
	G 3/4"	pneumatic	---	19	6500	2,0---10	≥P1---10	08/15	635	-MF-F2610
	G 1"	pneumatic	---	25	13500	2,5---10	≥P1---10	10/20	1125	-MF-F2615
	G 1 1/2"	pneumatic	---	39	35000	3,0---10	≥P1---10	45/30	3230	-MF-F2620
	G 2"	pneumatic	---	50	60000	3,0---10	≥P1---10	50/35	8580	-MF-F2680
 <p>3/2 NO Air/Spring</p>	G 1/8"	pneumatic	---	5,5	600	1,5---10	≥P1---10	05/08	110	-MF-F2700
	G 1/4"	pneumatic	---	8	1100	1,5---10	≥P1---10	10/12	355	-MF-F2701
	G 3/8"	pneumatic	---	10	1500	1,5---10	≥P1---10	10/12	340	-MF-F2706
	G 1/2"	pneumatic	---	15	5500	2,0---10	≥P1---10	08/15	705	-MF-F2703
	G 3/4"	pneumatic	---	19	6500	2,0---10	≥P1---10	08/15	635	-MF-F2710
	G 1"	pneumatic	---	25	13500	2,5---10	≥P1---10	10/20	1125	-MF-F2715
	G 1 1/2"	pneumatic	---	39	35000	3,0---10	≥P1---10	45/30	3230	-MF-F2720
	G 2"	pneumatic	---	50	60000	3,0---10	≥P1---10	50/35	8580	-MF-F2780

ACCESSORIES & SPARE PARTS

► Function 100% EDP ► Voltage ± 10% ► Frequency ± 5%

COILS

	Coil width (mm)	Operator Ø (mm)	Voltage	Power	Code
	22	10	12 VDC	3,5 W	-MF-0050
	22	10	24 VDC	3,5 W	-MF-0051
	22	10	24 VAC	5 VA	-MF-0106
	22	10	110 VAC	5 VA	-MF-0108
	22	10	220 VAC	5 VA	-MF-0124
	30	10	12 VDC	2,5 W	-MF-0301
	30	10	24 VDC	2,5 W	-MF-0302
	30	10	24 VAC	3,3 VA	-MF-0307
	30	10	110 VAC	3,3 VA	-MF-0309
	30	10	220 VAC	3,3 VA	-MF-0310
	30	13	12 VDC	11 W	-MF-0501
	30	13	24 VDC	11 W	-MF-0502
	30	13	24 VAC	10 VA	-MF-0507
	30	13	110 VAC	10 VA	-MF-0509
	30	13	220 VAC	10 VA	-MF-0510

► IP65 ► PG9

CONNECTORS

	Coil width (mm)	Voltage	Led-Vdr	Code
DIN 43650-B 	22	24V - 48V - 110 V- 220 V	-	-AM-5110
	22	24 volt	✓	-AM-5112L
	22	110 volt	✓	-AM-5113L
	22	220 volt	✓	-AM-5114L
DIN 43650-A 	30	24V - 48V - 110 V- 220 V	-	-AM-5111
	30	24 volt	✓	-AM-5115L
	30	110 volt	✓	-AM-5116L
	30	220 volt	✓	-AM-5117L

SERVICE KIT

	Description	Connection	Code
	Buffers, lip seals, o-rings	G 1/8"	-MF-F9605
	Buffers, lip seals, o-rings	G 1/4" - G 3/8"	-MF-F9610
	Membrane, buffers, o-rings	G 1/2" - G 3/4"	-MF-F9615
	Membrane, buffers, o-rings	G 1"	-MF-F9620
	Membrane, buffers, o-rings, quick-discharge membrane	G 1 1/2"	-MF-F9625
	Buffers, lip seals, o-rings, quick exhaust membrane G 2"	G 2"	-MF-F9630

MF-AirDrive™ SMART

3/2 POPPET VALVES COMPRESSED AIR SMART

- Range G 1/8" + G 1"
- The **SMART** version of MF-AirDrive™ valves patented by Mec Fluid 2
- Patented conical poppet system and shaped PU membrane
- For high flow rates and cycle numbers
- Robust construction and low weight
- Also available with external pilot control (for use with pressure values lower than the minimum recommended)



TECHNICAL FEATURES

Fluid	Filtered compressed air, with or without lubrication						
Ambient Temp.	-20 ÷ +50°C						
Fluid Temp.	Max +50°C						
Pressure	Max 10 bar						
Function	3/2 NC 3/2 NO						
Control	Pneumatic Indirect Electric						
Return	Mechanical and pneumatic spring						
Manual control	Screw, 2 positions						
Connection	G 1/8"	G 1/4"	G 3/8"	G 1/2"	G 3/4"	G 1"	
Shape							
Ø electric operator (mm)	10			13			
Absorption	3,5W (DC) - 5VA (AC) 2,5W (DC) - 3,3VA (AC)			11W(DC)-10VA(AC)			
Voltage	12VDC-24VDC- 24VAC-110VAC-220VAC						
Mounting position	Preferably vertical						
Materials	Body: aluminum / Seals: PU - NBR / Internal parts: aluminum - POM - Nickel Plated AVP -Brass Caps: sizes from G 1/8" to G 3/8" standard in polyamide PA6. Sizes G 1/2" G 3/4", G 1" in polyarylamide IXEF AG						

PRODUCT DATA & CODES

Connection	Control	Pilot Supply	Ø (mm)	Flow rate (l/min)	Working pressure (P1) from/to (bar)	Control pressure from/to (bar)	Time Exc.12/ Dis.10 (ms)	Electric Pilot Ø (mm)	Weight (gr)	Code
G 1/8"	electric	internal	5,5	600	1,5---10	---	15/18	10	130	-MF-F2500S
G 1/4"	electric	internal	8	1100	1,5---10	---	20/22	10	340	-MF-F2510S
G 3/8"	electric	internal	10	1500	1,5---10	---	20/22	10	325	-MF-F2520S
G 1/2"	electric	internal	15	5500	2,0---10	---	18/25	13	680	-MF-F2530S
G 3/4"	electric	internal	19	6500	2,0---10	---	18/25	13	640	-MF-F2540S
G 1"	electric	internal	25	13500	2,5---10	---	20/30	13	1065	-MF-F2545S

▶ 3/2 NC Solenoid/Spring

G 1/8"	electric	internal	5,5	600	1,5---10	---	15/18	10	130	-MF-F2501S
G 1/4"	electric	internal	8	1100	1,5---10	---	20/22	10	340	-MF-F2511S
G 3/8"	electric	internal	10	1500	1,5---10	---	20/22	10	325	-MF-F2521S
G 1/2"	electric	internal	15	5500	2,0---10	---	18/25	13	680	-MF-F2531S
G 3/4"	electric	internal	19	6500	2,0---10	---	18/25	13	640	-MF-F2541S
G 1"	electric	internal	25	13500	2,5---10	---	20/30	13	1065	-MF-F2546S

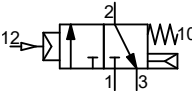
▶ 3/2 NO Solenoid/Spring

G 1/8"	electric	external	5,5	600	0 --10	≥P1---10	15/18	10	125	-MF-F2500AS
G 1/4"	electric	external	8	1100	0 --10	≥P1---10	20/22	10	335	-MF-F2510AS
G 3/8"	electric	external	10	1500	0 --10	≥P1---10	20/22	10	320	-MF-F2520AS
G 1/2"	electric	external	15	5500	0 --10	≥P1---10	18/25	13	675	-MF-F2530AS
G 3/4"	electric	external	19	6500	0 --10	≥P1---10	18/25	13	635	-MF-F2540AS
G 1"	electric	external	25	13500	0 --10	≥P1---10	20/30	13	1060	-MF-F2545AS

▶ 3/2 NC Solenoid/Spring

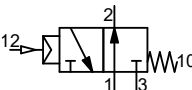
G 1/8"	external	5,5	5,5	600	0 --10	≥P1---10	15/18	10	125	-MF-F2501AS
G 1/4"	external	8	8	1100	0 --10	≥P1---10	20/22	10	335	-MF-F2511AS
G 3/8"	external	10	10	1500	0 --10	≥P1---10	20/22	10	320	-MF-F2521AS
G 1/2"	external	15	15	5500	0 --10	≥P1---10	18/25	13	675	-MF-F2531AS
G 3/4"	external	19	19	6500	0 --10	≥P1---10	18/25	13	635	-MF-F2541AS
G 1"	external	25	25	13500	0 --10	≥P1---10	20/30	13	1060	-MF-F2546AS

▶ 3/2 NO Solenoid/Spring



Connection	Control	Pilot supply	Ø (mm)	Flow rate (l/min)	Working pressure (P1) from/to (bar)	Control pressure from/to (bar)	Time Exc.12 / Dis.10 (ms)	Weight (gr)	Code
G 1/8"	pneumatic	---	5,5	600	1,5---10	≥P1---10	05/08	95	-MF-F2600S
G 1/4"	pneumatic	---	8	1100	1,5---10	≥P1---10	10/12	295	-MF-F2601S
G 3/8"	pneumatic	---	10	1500	1,5---10	≥P1---10	10/12	285	-MF-F2606S
G 1/2"	pneumatic	---	15	5500	2,0---10	≥P1---10	08/15	580	-MF-F2603S
G 3/4"	pneumatic	---	19	6500	2,0---10	≥P1---10	08/15	510	-MF-F2610S
G 1"	pneumatic	---	25	13500	2,5---10	≥P1---10	10/20	970	-MF-F2615S

▶ **3/2 NC**
Air/Spring



G 1/8"	pneumatic	---	5,5	600	1,5---10	≥P1---10	05/08	95	-MF-F2700S
G 1/4"	pneumatic	---	8	1100	1,5---10	≥P1---10	10/12	295	-MF-F2701S
G 3/8"	pneumatic	---	10	1500	1,5---10	≥P1---10	10/12	285	-MF-F2706S
G 1/2"	pneumatic	---	15	5500	2,0---10	≥P1---10	08/15	580	-MF-F2703S
G 3/4"	pneumatic	---	19	6500	2,0---10	≥P1---10	08/15	510	-MF-F2710S
G 1"	pneumatic	---	25	13500	2,5---10	≥P1---10	10/20	970	-MF-F2715S

▶ **3/2 NO**
Air/Spring

ACCESSORIES & SPARE PARTS

► Function 100% EDP ► Voltage ± 10% ► Frequency ± 5%

COILS

	Coil width (mm)	Operator Ø (mm)	Voltage	Power	Code
	22	10	12 VDC	3,5 W	-MF-0050
	22	10	24 VDC	3,5 W	-MF-0051
	22	10	24 VAC	5 VA	-MF-0106
	22	10	110 VAC	5 VA	-MF-0108
	22	10	220 VAC	5 VA	-MF-0124
	30	10	12 VDC	2,5 W	-MF-0301
	30	10	24 VDC	2,5 W	-MF-0302
	30	10	24 VAC	3,3 VA	-MF-0307
	30	10	110 VAC	3,3 VA	-MF-0309
	30	10	220 VAC	3,3 VA	-MF-0310
	30	13	12 VDC	11 W	-MF-0501
	30	13	24 VDC	11 W	-MF-0502
	30	13	24 VAC	10 VA	-MF-0507
	30	13	110 VAC	10 VA	-MF-0509
	30	13	220 VAC	10 VA	-MF-0510

► IP65 ► PG9

CONNECTORS

	Coil width (mm)	Voltage	Led-Vdr	Code
DIN 43650-B 	22	24V - 48V - 110 V- 220 V	-	-AM-5110
	22	24 volt	✓	-AM-5112L
	22	110 volt	✓	-AM-5113L
	22	220 volt	✓	-AM-5114L
DIN 43650-A 	30	24V - 48V - 110 V- 220 V	-	-AM-5111
	30	24 volt	✓	-AM-5115L
	30	110 volt	✓	-AM-5116L
	30	220 volt	✓	-AM-5117L

SERVICE KIT

	Description	Connection	Code
	Buffers, lip seals, o-rings	G 1/8"	-MF-F9605
	Buffers, lip seals, o-rings	G 1/4" - G 3/8"	-MF-F9610
	Membrane, buffers, o-rings	G 1/2" - G 3/4"	-MF-F9615
	Membrane, buffers, o-rings	G 1"	-MF-F9620
	Membrane, buffers, o-rings, quick-discharge membrane	G 1 1/2"	-MF-F9625
	Buffers, lip seals, o-rings, quick exhaust membrane G 2"	G 2"	-MF-F9630

MF-AirDrive™ HP

3/2 POPPET VALVES COMPRESSED AIR HIGH PRESSURE

- Range G 1/4" + G 1"

The **High Pressure** version of MF-AirDrive™ valves with an operating working pressure 4-40 bar - patented by Mec Fluid 2

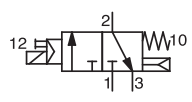
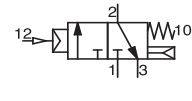
- Patented conical system and shaped PU membrane
- For high flow rates and cycle numbers
- Robust construction and low weight



TECHNICAL FEATURES

Fluid	Filtered compressed air, with or without lubrication					
Ambient Temp.	-20 ÷ +50°C					
Fluid Temp.	Max +50°C					
Pressure	Max 40 bar					
Function	3/2 NC					
Control	Pneumatic Indirect Electric					
Return	Mechanical and pneumatic spring					
Manual control	No					
Connection	G 1/4"	G 3/8"	G 1/2"	G 3/4"	G 1"	
Shape						
Ø electric operator (mm)	13			13		
Absorption	11W{DC}-10VA{AC}					
Voltage	12VDC-24VDC- 24VAC-110VAC-220VAC					
Mounting position	Preferably vertical					
Materials	Body: aluminum / Seals: PU - NBR / Internal parts: aluminum - brass Caps: aluminium					

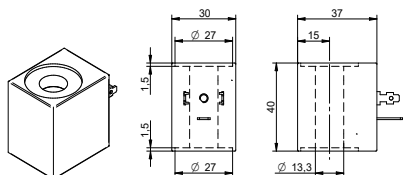
PRODUCT DATA & CODES

	Connection	Control	Ø (mm)	Flow rate (l/min)	Pilot supply	Working pressure (P1) from/to (bar)	Control pressure from/to (bar)	Time Exc.12/ Dis.10 (ms)	Electric Pilot Ø (mm)	Weight (gr)	Code
	G 1/4"	electric	internal	8	1100	4,00---40	---	20/22	13	380	-MF-F2510HP
	G 3/8"	electric	internal	10	1500	4,00---40	---	20/22	13	365	-MF-F2520HP
	G 1/2"	electric	internal	15	5500	4,00---40	---	18/25	13	785	-MF-F2530HP
	G 3/4"	electric	internal	19	6500	4,00---40	---	18/25	13	745	-MF-F2540HP
	G 1"	electric	internal	25	13500	4,00---40	---	20/30	13	1205	-MF-F2545HP
<p>▶ 3/2 NC Solenoid/Spring</p> 	G 1/4"	pneumatic	---	8	1100	4,00---40	≥P1---40	10/12		355	-MF-F2601HP
G 3/8"	pneumatic	---	10	1500	4,00---40	≥P1---40	10/12		340	-MF-F2606HP	
G 1/2"	pneumatic	---	15	5500	4,00---40	≥P1---40	08/15		705	-MF-F2603HP	
G 3/4"	pneumatic	---	19	6500	4,00---40	≥P1---40	08/15		635	-MF-F2610HP	
G 1"	pneumatic	---	25	13500	4,00---40	≥P1---40	10/20		1125	-MF-F2615HP	

ACCESSORIES & SPARE PARTS

> Function 100% EDP > Voltage $\pm 10\%$ > Frequency $\pm 5\%$

COILS

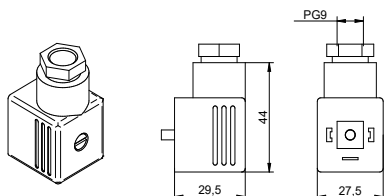


Coil width (mm)	Operator \varnothing (mm)	Voltage	Power	Code
30	13	12 VDC	11 W	-MF-0050
30	13	24 VDC	11 W	-MF-0051
30	13	24 VAC	10 VA	-MF-0106
30	13	110 VAC	10 VA	-MF-0108
30	13	220 VAC	10 VA	-MF-0124

CONNECTORS

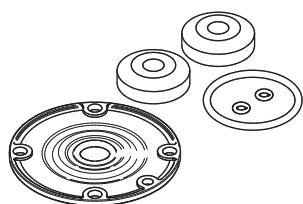
> IP65 > PG9

DIN 43650-A



Coil width (mm)	Voltage	Led-Vdr	Code
30	24V - 48V - 110 V- 220 V	-	-AM-5111
30	24 volt	✓	-AM-5115L
30	110 volt	✓	-AM-5116L
30	220 volt	✓	-AM-5117L

SERVICE KIT



Description	Connection	Code
Buffers, lip seals, o-rings	G 1/4" - G 3/8"	-MF-F9610HP
Membrane, buffers, o-rings	G 1/2" - G 3/4"	-MF-F9615HP
Membrane, buffers, o-rings	G 1"	-MF-F9620HP



MF-AirDrive™ 3/2 POPPET VALVES

ALL DATA SHEET AVAILABLE AT:
MECFLUID2.COM

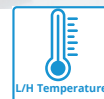
SCAN THIS QR CODE



MF-AirDrive™ LH

3/2 POPPET VALVES COMPRESSED AIR LOW/HIGH TEMPERATURE

- Range G 1/4" + G 2"
- The **Low/High temperature** version of MF-Air-Drive™ patented by Mec Fluid 2
- Patented conical shutter system
- For high flow rates and cycle numbers
- Robust construction and low weight



Fluid	Filtered compressed air, with or without lubrication							
Ambient Temp.	-40°C ÷ +50°C (L) / -10°C ÷ +150°C (H)							
Fluid Temp.	Max +50°C							
Pressure	Max 10 bar							
Function	3/2 NC 3/2 NO							
Control	Pneumatic Indirect Electric							
Return	Mechanical and pneumatic spring							
Manual control								
Connection		G 1/4"	G 3/8"	G 1/2"	G 3/4"	G 1"	G 1 1/2"	G 2"
Shape								
Ø electric operator (mm)	13			13				
Absorption	3,5W (DC) - 5VA (AC) 2,5W (DC) - 3,3VA (AC)			11W{DC}-10VA{AC}				
Voltage	12VDC-24VDC- 24VAC-110VAC-220VAC							
Mounting position								
	Body: aluminum / Seals: Viton (H version)- NBR - Viton (L version) / Internal parts: aluminum - Brass Caps: aluminium							

	Connection	Control	Ø (mm)	Flow rate (l/min)	Pilot supply	Working pressure (P1) from/to (bar)	Control pressure from/to (bar)	Time Exc.12/ Dis.10 (ms)	Electric Pilot Ø (mm)	Weight (gr) LOW/HIGH	Code LOW temp.	Code HIGH temp.
	G 1/4"	electric	8	1100	internal	1,5---10	---	20/22	13	380/400	-MF-F2510L	-MF-F2510H
	G 3/8"	electric	10	1500	internal	1,5---10	---	20/22	13	365/385	-MF-F2520L	-MF-F2520H
	G 1/2"	electric	15	5500	internal	2,0---10	---	18/25	13	965/985	-MF-F2530L	-MF-F2530H
	G 3/4"	electric	19	6500	internal	2,0---10	---	18/25	13	925/945	-MF-F2540L	-MF-F2540H
	G 1"	electric	25	13500	internal	2,5---10	---	20/30	13	1465/1485	-MF-F2545L	-MF-F2545H
	G 1 1/2"	electric	39	35000	internal	3,0---10	---	45/30	13	4330/4350	-MF-F2560L	-MF-F2560H
	G 2"	electric	50	60000	internal	3,0---10	---	50/35	13	8880/8900	-MF-F2580L	-MF-F2580H
	G 1/4"	electric	8	1100	internal	1,5---10	---	20/22	13	380/400	-MF-F2511L	-MF-F2511H
	G 3/8"	electric	10	1500	internal	1,5---10	---	20/22	13	365/385	-MF-F2521L	-MF-F2521H
	G 1/2"	electric	15	5500	internal	2,0---10	---	18/25	13	965/985	-MF-F2531L	-MF-F2531H
	G 3/4"	electric	19	6500	internal	2,0---10	---	18/25	13	925/945	-MF-F2541L	-MF-F2541H
	G 1"	electric	25	13500	internal	2,5---10	---	20/30	13	1465/1485	-MF-F2546L	-MF-F2546H
	G 1 1/2"	electric	39	35000	internal	3,0---10	---	45/30	13	4330/4350	-MF-F2561L	-MF-F2561H
	G 2"	electric	50	60000	internal	3,0---10	---	50/35	13	8880/8900	-MF-F2581L	-MF-F2581H
	G 1/4"	pneumatic	8	1100	---	1,5---10	≥P1---10	10/12	---	300/300	-MF-F2601L	-MF-F2601H
	G 3/8"	pneumatic	10	1500	---	1,5---10	≥P1---10	10/12	---	285/285	-MF-F2606L	-MF-F2606H
	G 1/2"	pneumatic	15	5500	---	2,0---10	≥P1---10	08/15	---	885/885	-MF-F2603L	-MF-F2603H
	G 3/4"	pneumatic	19	6500	---	2,0---10	≥P1---10	08/15	---	845/845	-MF-F2610L	-MF-F2610H
	G 1"	pneumatic	25	13500	---	2,5---10	≥P1---10	10/20	---	1385/1385	-MF-F2615L	-MF-F2615H
	G 1 1/2"	pneumatic	39	35000	---	3,0---10	≥P1---10	45/30	---	4150/4150	-MF-F2620L	-MF-F2620H
	G 2"	pneumatic	50	60000	---	3,0---10	≥P1---10	50/35	---	8750/8750	-MF-F2680L	-MF-F2680H
	G 1/4"	pneumatic	8	1100	---	1,5---10	≥P1---10	10/12	---	300/300	-MF-F2701L	-MF-F2701H
	G 3/8"	pneumatic	10	1500	---	1,5---10	≥P1---10	10/12	---	285/285	-MF-F2706L	-MF-F2706H
	G 1/2"	pneumatic	15	5500	---	2,0---10	≥P1---10	08/15	---	885/885	-MF-F2703L	-MF-F2703H
	G 3/4"	pneumatic	19	6500	---	2,0---10	≥P1---10	08/15	---	845/845	-MF-F2710L	-MF-F2710H
	G 1"	pneumatic	25	13500	---	2,5---10	≥P1---10	10/20	---	1385/1385	-MF-F2715L	-MF-F2715H
	G 1 1/2"	pneumatic	39	35000	---	3,0---10	≥P1---10	45/30	---	4150/4150	-MF-F2720L	-MF-F2720H
	G 2"	pneumatic	50	60000	---	3,0---10	≥P1---10	50/35	---	8750/8750	-MF-F2780L	-MF-F2780H

ACCESSORIES & SPARE PARTS

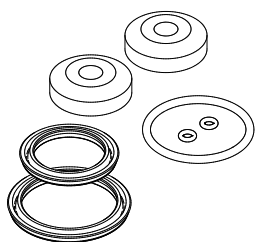
COILS

To be defined with the Mec Fluid Technical Department

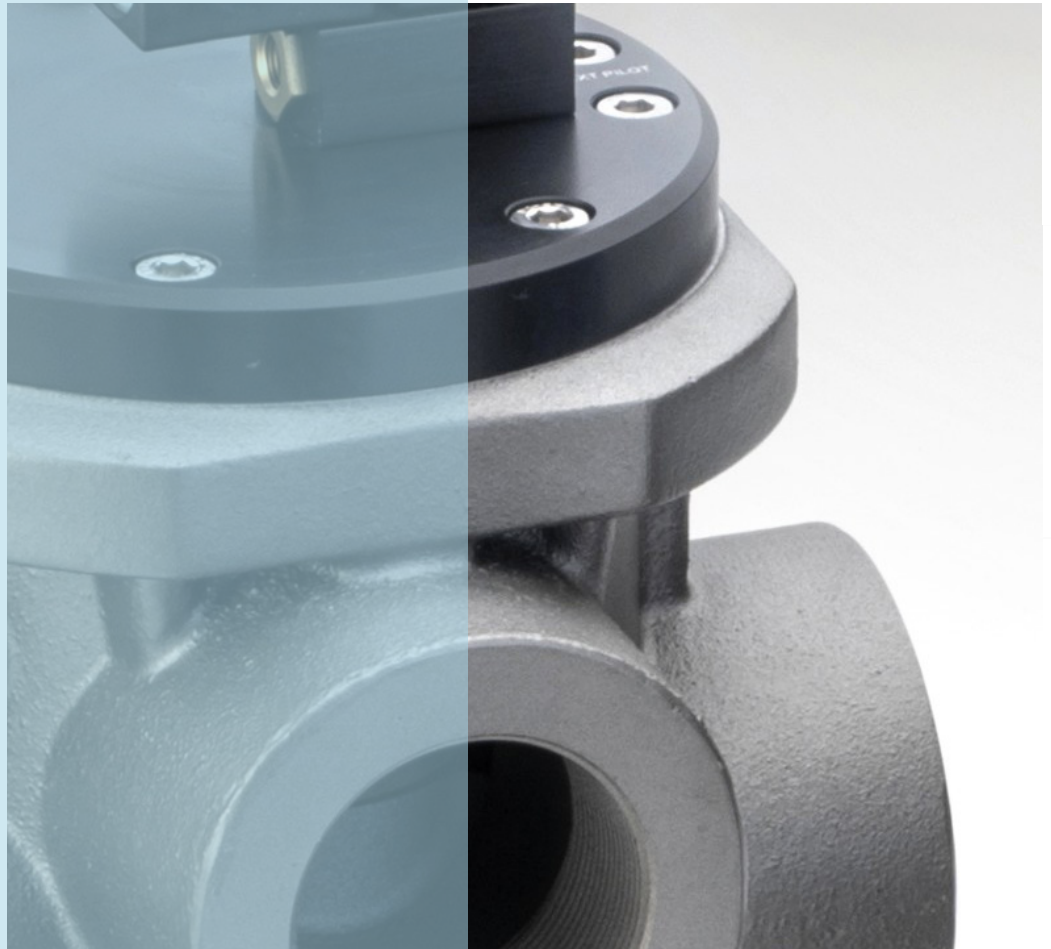
CONNECTORS

To be defined with the Mec Fluid Technical Department

SERVICE KIT



Description	Connection	Code
Buffers, lip seals, o-rings	G 1/4" - G 3/8"	-MF-F9610L/H
Membrane, pads, o-rings	G 1/2" - G 3/4"	-MF-F9615L/H
Membrane, pads, o-rings	G 1"	-MF-F9620L/H
Membrane, pads, o-rings, quick-discharge membrane	G 1 1/2"	-MF-F9625L/H
Buffers, lip seals, o-rings, quick exhaust membrane G 2"	G 2"	-MF-F9630L/H



MF-AirDrive™

ALL DATASHEET AVAILABLE AT:
MECFLUID2.COM

SCAN THIS QR CODE



MF-AirDrive™ ATEX

3/2 POPPET VALVES COMPRESSED AIR ATEX CERTIFIED

- Range G 1/8" + G 2"
- Body and caps in aluminium
- Also available with external pilot control



Conformity with EU Directive 2014/34
ELECTRIC CONTROL II 3G Ex h IIC T3 Gg
 II 3D Ex h IIIC T200°C Dc
PNEUMATIC CONTROL II 3G Ex h IIC T6 Gg
 II 3D Ex h IIIC T85°C Dc

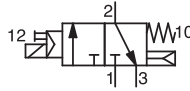
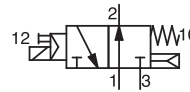
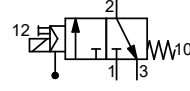
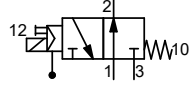


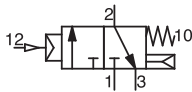
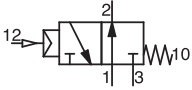
TECHNICAL FEATURES



Fluid	Filtered compressed air, with or without lubrication							
Ambient Temp.	-20 ÷ +50°C							
Fluid Temp.	Max +50°C							
Pressure	Max 10 bar							
Function	3/2 NC I 3/2 NO							
Control	Pneumatic I Indirect Electric							
Return	Mechanical and pneumatic spring							
Connection	G 1/8"	G 1/4"	G 3/8"	G 1/2"	G 3/4"	G 1"	G 1 1/2"	G 2"
Shape								
Ø electric operator (mm)	10			13				
Absorption	8VA (AC) 7W (DC) - 10VA (AC) -11VA (AC)			11W(DC)-15VA(AC)-17VA(AC)-25VA(AC)				
Voltage	24VDC- 24VAC-110VAC-220VAC							
Mounting position	Preferably vertical							
Materials	Body: aluminum / Seals: PU - NBR / Internal parts: aluminum - POM - Brass Caps: 2011 alloy aluminum - black anodized.							

PRODUCT DATA & CODES

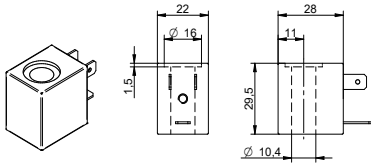
	Connection	Control	Ø (mm)	Flow rate (l/min)	Pilot supply	Working pressure (P1) from/to (bar)	Control pressure from/to (bar)	Time Exc.12/ Dis.10 (ms)	Electric Pilot Ø (mm)	Weight (gr)	Code
 <p>3/2 NC Solenoid/Spring</p>	G 1/8"	electric	5,5	600	internal	1,5---10	---	15/18	10	135	-MF-F2500X
	G 1/4"	electric	8	1100	internal	1,5---10	---	20/22	10	390	-MF-F2510X
	G 3/8"	electric	10	1500	internal	1,5---10	---	20/22	10	375	-MF-F2520X
	G 1/2"	electric	15	5500	internal	2,0---10	---	18/25	13	795	-MF-F2530X
	G 3/4"	electric	19	6500	internal	2,0---10	---	18/25	13	755	-MF-F2540X
	G 1"	electric	25	13500	internal	2,5---10	---	20/30	13	1215	-MF-F2545X
	G 1 1/2"	electric	39	35000	internal	3,0---10	---	45/30	13	3340	-MF-F2560X
	G 2"	electric	50	60000	internal	3,0---10	---	50/35	13	8690	-MF-F2580X
 <p>3/2 NO Solenoid/Spring</p>	G 1/8"	electric	5,5	600	internal	1,5---10	---	15/18	10	135	-MF-F2501X
	G 1/4"	electric	8	1100	internal	1,5---10	---	20/22	10	390	-MF-F2511X
	G 3/8"	electric	10	1500	internal	1,5---10	---	20/22	10	375	-MF-F2521X
	G 1/2"	electric	15	5500	internal	2,0---10	---	18/25	13	795	-MF-F2531X
	G 3/4"	electric	19	6500	internal	2,0---10	---	18/25	13	755	-MF-F2541X
	G 1"	electric	25	13500	internal	2,5---10	---	20/30	13	1215	-MF-F2546X
	G 1 1/2"	electric	39	35000	internal	3,0---10	---	45/30	13	3340	-MF-F2561X
	G 2"	electric	50	60000	internal	3,0---10	---	50/35	13	8690	-MF-F2581X
 <p>3/2 NC Solenoid/Spring</p>	G 1/8"	electric	5,5	600	external	0 --10	≥P1---10	15/18	10	130	-MF-F2500AX
	G 1/4"	electric	8	1100	external	0 --10	≥P1---10	20/22	10	385	-MF-F2510AX
	G 3/8"	electric	10	1500	external	0 --10	≥P1---10	20/22	10	370	-MF-F2520AX
	G 1/2"	electric	15	5500	external	0 --10	≥P1---10	18/25	13	785	-MF-F2530AX
	G 3/4"	electric	19	6500	external	0 --10	≥P1---10	18/25	13	745	-MF-F2540AX
	G 1"	electric	25	13500	external	0 --10	≥P1---10	20/30	13	1200	-MF-F2545AX
	G 1 1/2"	electric	39	35000	external	0 --10	≥P1---10	45/30	13	3320	-MF-F2560AX
	G 2"	electric	50	60000	external	0 --10	≥P1---10	50/35	13	8650	-MF-F2580AX
 <p>3/2 NO Solenoid/Spring</p>	G 1/8"	electric	5,5	600	external	0 --10	≥P1---10	15/18	10	130	-MF-F2501AX
	G 1/4"	electric	8	1100	external	0 --10	≥P1---10	20/22	10	385	-MF-F2511AX
	G 3/8"	electric	10	1500	external	0 --10	≥P1---10	20/22	10	370	-MF-F2521AX
	G 1/2"	electric	15	5500	external	0 --10	≥P1---10	18/25	13	785	-MF-F2531AX
	G 3/4"	electric	19	6500	external	0 --10	≥P1---10	18/25	13	745	-MF-F2541AX
	G 1"	electric	25	13500	external	0 --10	≥P1---10	20/30	13	1200	-MF-F2546AX
	G 1 1/2"	electric	39	35000	external	0 --10	≥P1---10	45/30	13	3320	-MF-F2561AX
	G 2"	electric	50	60000	external	0 --10	≥P1---10	50/35	13	8650	-MF-F2581AX

	Connection	Control	Ø (mm)	Flow rate (l/min)	Pilot supply	Working pressure (P1) from/to (bar)	Control pressure from/to (bar)	Time Exc.12/ Dis.10 (ms)	Weight	Code
 <p>3/2 NC Air/Spring</p>	G 1/8"	pneumatic	5,5	600	---	1,5---10	≥P1---10	05/08	110	-MF-F2600X
	G 1/4"	pneumatic	8	1100	---	1,5---10	≥P1---10	10/12	355	-MF-F2601X
	G 3/8"	pneumatic	10	1500	---	1,5---10	≥P1---10	10/12	340	-MF-F2606X
	G 1/2"	pneumatic	15	5500	---	2,0---10	≥P1---10	08/15	705	-MF-F2603X
	G 3/4"	pneumatic	19	6500	---	2,0---10	≥P1---10	08/15	635	-MF-F2610X
	G 1"	pneumatic	25	13500	---	2,5---10	≥P1---10	10/20	1125	-MF-F2615X
	G 1 1/2"	pneumatic	39	35000	---	3,0---10	≥P1---10	45/30	3230	-MF-F2620X
	G 2"	pneumatic	50	60000	---	3,0---10	≥P1---10	50/35	8580	-MF-F2680X
 <p>3/2 NO Air/Spring</p>	G 1/8"	pneumatic	5,5	600	---	1,5---10	≥P1---10	05/08	110	-MF-F2700X
	G 1/4"	pneumatic	8	1100	---	1,5---10	≥P1---10	10/12	355	-MF-F2701X
	G 3/8"	pneumatic	10	1500	---	1,5---10	≥P1---10	10/12	340	-MF-F2706X
	G 1/2"	pneumatic	15	5500	---	2,0---10	≥P1---10	08/15	705	-MF-F2703X
	G 3/4"	pneumatic	19	6500	---	2,0---10	≥P1---10	08/15	635	-MF-F2710X
	G 1"	pneumatic	25	13500	---	2,5---10	≥P1---10	10/20	1125	-MF-F2715X
	G 1 1/2"	pneumatic	39	35000	---	3,0---10	≥P1---10	45/30	3230	-MF-F2720X
	G 2"	pneumatic	50	60000	---	3,0---10	≥P1---10	50/35	8580	-MF-F2780X

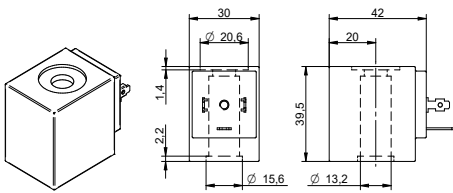
ACCESSORIES & SPARE PARTS

► Function 100% EDP ► Voltage ± 10% ► Frequency ± 5%

COILS



Coil width (mm)	Operator Ø (mm)	Voltage	Power	Code
22	10	24 VDC	7 W	-MF-0051X
22	10	24 VAC	11 VA	-MF-0106X
22	10	110 VAC	10 VA	-MF-0108X
22	10	220 VAC	8 VA	-MF-0124X

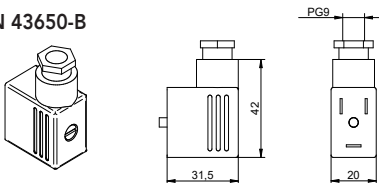


30	13	24 VDC	11 W	-MF-0502X
30	13	24 VAC	17 VA	-MF-0507X
30	13	110 VAC	15 VA	-MF-0509X
30	13	220 VAC	25 VA	-MF-0510X

► IP65 ► PG9/PG11

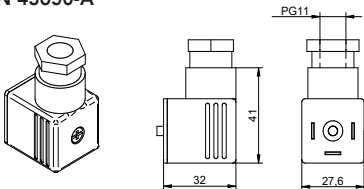
CONNECTORS

DIN 43650-B



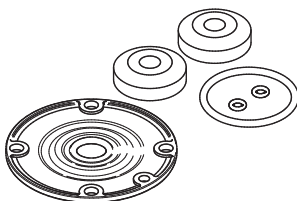
Coil width (mm)	Voltage	Led-Vdr	Code
22	24V - 48V - 110 V- 220 V	-	-AM-5110X

DIN 43650-A



30	24V - 48V - 110 V- 220 V	-	-AM-5111X
----	--------------------------	---	-----------

SERVICE KIT



Description	Connection	Code
Buffers, lip seals, o-rings	G 1/8"	-MF-F9605X
Buffers, lip seals, o-rings	G 1/4" - G 3/8"	-MF-F9610X
Membrane, buffers, o-rings	G 1/2" - G 3/4"	-MF-F9615X
Membrane, buffers, o-rings	G 1"	-MF-F9620X
Membrane, buffers, o-rings, quick-discharge membrane	G 1 1/2"	-MF-F9625X
Buffers, lip seals, o-rings, quick exhaust membrane G 2"	G 2"	-MF-F9630X

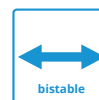
MF-AirDrive™ BISTABLE

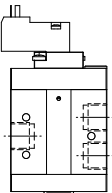
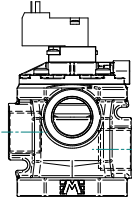
3 / 2 POPPET VALVES COMPRESSED AIR BISTABLE

- Range G1/4" ÷ G1"
- With bistable solenoid pilot; the valve requires an electrical signal to change the position of the shutter
- Patented conical poppet system and shaped PU membrane
- Robust construction and low weight
- Equipped with low-consumption coil and connector

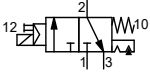


TECHNICAL FEATURES



Fluid	Filtered compressed air, with or without lubrication				
Ambient Temp.	-10 ÷ +50°C				
Fluid Temp.	Max +50°C				
Function	BISTABLE				
Control	Indirect electric				
Return	Mechanical and pneumatic spring				
Connection	G 1/4"	G 3/8"	G 1/2"	G 3/4"	G 1"
Shape					
Electric operator (mm)	15 x 15				
Absorption	2,5 Watt				
Voltage	24VDC				
Mounting position	Preferably vertical				
Materials	Body: aluminum / Seals: PU - NBR / Internal parts: aluminum - POM - Brass / Caps: polyamide PA6				

PRODUCT DATA & CODES

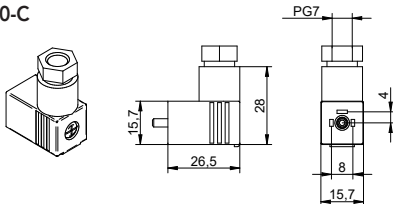
	Connection	Control	Ø (mm)	Flow rate (NI/min)	Working pressure (P1) from/to (bar)	Control pressure from/to (bar)	Time Exc. 12/ Dis.10 (ms)	Weight	Code
	G 1/4"	bistable electric	8	1100	3---10	≥P1---10	45/48	360	-MF-F2510SF02B
	G 3/8"	bistable electric	10	1500	3---10	≥P1---10	50/52	345	-MF-F2520SF02B
	G 1/2"	bistable electric	15	5500	3---10	≥P1---10	50/52	620	-MF-F2530SF02B
	G 3/4"	bistable electric	19	6500	3---10	≥P1---10	48/55	580	-MF-F2540SF02B
	G 1"	bistable electric	25	13500	3---10	≥P1---10	48/55	1005	-MF-F2545SF02B

ACCESSORIES & SPARE PARTS

► IP65 ► PG7

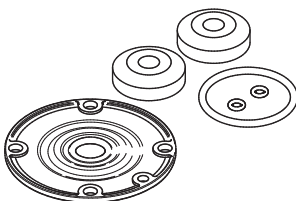
CONNECTORS

DIN 43650-C



Voltage	Led-Vdr	Code
24V - 48V - 110 V- 220 V	-	-AM-5109C

SERVICE KIT



Description	Connection	Code
Buffers, lip seals, o-rings	G 1/8"	-MF-F9605
Buffers, lip seals, o-rings	G 1/4" - G 3/8"	-MF-F9610
Membrane, buffers, o-rings	G 1/2" - G 3/4"	-MF-F9615
Membrane, buffers, o-rings	G 1"	-MF-F9620